

LUNES A



ANGULAR DE DOS PUERTAS CORREDERAS + DOS FIJOS
CORNER ENTRY SHOWER ENCLOSURE, 2 SLIDING DOORS + 2 FIXED PANELS

| Medidas Dimensions | | | Código Code | Cristales Glass | | | | Perfiles Profile type | | |
|--|------------------------------|-------------------|----------------|-----------------------|------|----------------------|-----------------------------------|--------------------------|--------|-----------------|
| Extensibilidad Actual dimensions | Fijo frontal Fixed panels | Entrada Access | | 1 | 2 | 3 | 5 | D | B | K |
| A | F1 | * | | Transparente Clear | Aqua | Estampado Obscure | Serig. Esprit Esprit print. | Blanco White | Silver | Cromo Chrome |
| 66 ↔ 69 | 33 | 35 | LUNESA66L- | ● | | | | | | |
| 69 ↔ 72 | 34 | 37 | LUNESA69L- | ● | | | | | | |
| 72 ↔ 75 | 36 | 39 | LUNESA72L- | | | | | | | |
| 75 ↔ 78 | 37 | 41 | LUNESA75L- | ● | | | | | | |
| 78 ↔ 81 | 39 | 43 | LUNESA78L- | ● | | | | | | |
| 81 ↔ 84 | 40 | 45 | LUNESA81L- | | | | | | | |
| 84 ↔ 87 | 42 | 47 | LUNESA84L- | | | | | | | |
| 87 ↔ 90 | 43 | 49 | LUNESA87L- | ● | | | | | | |
| 90 ↔ 93 | 45 | 51 | LUNESA90L- | | | | | | | |
| 93 ↔ 96 | 46 | 53 | LUNESA93L- | | | | | | | |
| 96 ↔ 99 | 48 | 55 | LUNESA96L- | ● | | | | | | |
| 99 ↔ 102 | 49 | 57 | LUNESA99L- | | | | | | | |

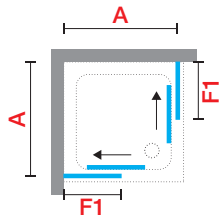
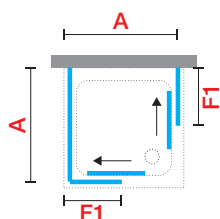
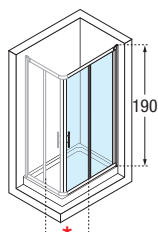
H 160 ↓ 200 L 63 ↔ 116

LUNESALSP

ESPECIAL / SPECIAL

● Entrega en un plazo máximo de 7 días
Delivery within 7 business days

Se puede pedir un fijo lateral para cubrir 3 lados
Para componer un ángulo pedir 2 laterales
It's possible order 1 fixed panel for solution with 3 sides
To complete a corner entry, order 2 sides

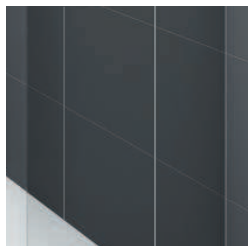


Construcción del código:
Construction of the code:

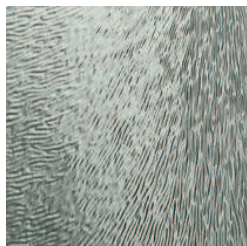
Código Code + Cristales Glass + Perfiles Profile = Código completo del producto
Final product code

DATOS TÉCNICOS / TECHNICAL DATA

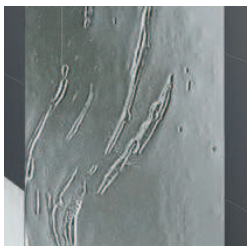
CRISTAL / GLASS TYPES 3,4,5 mm (European standards UNI EN 14428)



Transparente / Clear
COD. 1



Estampado / Obscure
COD. 3



Aqua
COD. 2

SERIGRAFIA / PRINTING



Esprit
COD. 5

TIRADOR / HANDLES



Tirador cromo
Chromed metal handle

Medida entre agujeros de 140 mm
Interaxis 140 mm

COLORES PERFILES / PROFILE COLOURS



Blanco
White
COD. D

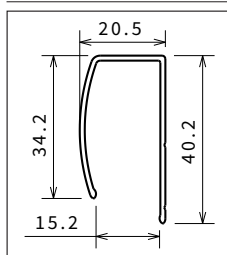


Silver
COD. B



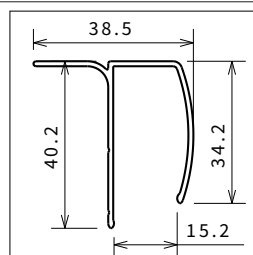
Cromo
Chrome
COD. K

MEDIDAS QUE OCUPAN LOS PERFILES EN LA PARED OVERALL DIMENSIONS FIXING PROFILES



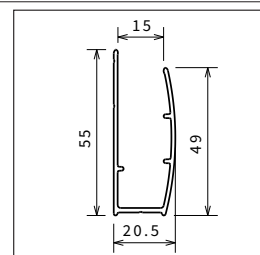
a pared
wall

| Perfiles Profile type | Código Code |
|--------------------------|----------------|
| Blanco White | P01HAAS-T-A |
| Silver | P01HAAS-T-B |
| Cromo Chrome | P01HAAS-T-K |



a pared
wall

| Perfiles Profile type | Código Code |
|--------------------------|----------------|
| Blanco White | P01HAPST-A |
| Silver | P01HAPST-B |
| Cromo Chrome | P01HAPST-K |



compensadores
compensatory

| Perfiles Profile type | Código Code |
|--------------------------|----------------|
| Blanco White | P01SACST-A |
| Silver | P01SACST-B |
| Cromo Chrome | P01SACST-K |

OPCIONAL / OPTIONAL



Barra de sujeción en ángulo
Corner support bar

• Cromo / Chrome

| Medidas Dimensions | Código Code |
|-----------------------|----------------|
| 15 cm | R80LOU150-K |
| 25 cm | R80LOU250-K |
| 35 cm | R80LOU350-K |
| 45 cm | R80LOU450-K |



Perfil a techo / Ceiling profile

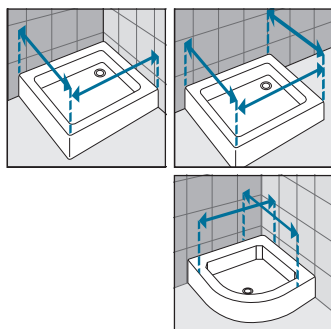
Perfil especial para combinaciones con
fijos LUNES F
Special profile for ceiling fixing to be
combined to LUNES F.

| Perfiles Profile type | Code | h 180 ↑ 265 |
|--------------------------|---------|-------------|
| Blanco/White | SPA3102 | |
| Silver | SPA3102 | |

ATENCIÓN: en la versión cromo la altura
máxima del perfil es de 240 cm
ATTENTION: In the chrome version the
maximum height of profile is of 240 cm

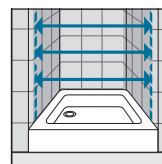
| Perfiles Profile type | Code | h 240 |
|--------------------------|--------------|-------|
| Cromo Chrome | SPA31240ST-K | |

TOMA DE MEDIDAS / HOW TO TAKE THE MEASUREMENTS



Tomar las medidas desde la pared hasta el borde externo del plato de ducha.

Take the measurements from wall to the external edge of the shower tray. Dimensions must be taken once the walls are finished and tiled, according to the above drawings.



Tomar medidas de pared a pared, medir la parte baja, la central y la superior. Cursar el pedido con la medida más pequeña.

Take the measurements from wall to wall at the bottom, at the top, in the middle and use the smallest. Dimensions must be taken once the walls are finished and tiled, according to the above drawings.