

TERMOSTATI UNIPOLARI E BIPOLARI PER SCALDABAGNI UNIPOLAR & BIPOLAR THERMOSTATS FOR WATER HEATERS



Termostato unipolare ad asta per correnti monofasi con sicurezza bipolare mediante bimetallo, a riarmo manuale.

Taratura funzionale da 20°C a 90°C.

Taratura sicurezza da 50°C a 120°C per correnti fino a 20A 250 Vac.

Differenziale termico 10°C ±5°C.

Lunghezza asta standard 275 mm, variabile fino a 450 mm.

Prodotto omologato secondo la Normativa Europea EN 60730-1, EN 60730-2-9:2010 ed ai requisiti della direttiva L.V.D. 2006/95/CE.

Unipolar stemmed type thermostat for single phase voltage bipolar bimetallic safety device with manual reset.

Functioning temperature from 20°C to 90°C.

Security range setting from 50°C to 120°C for power till 20A 250 Vac.

Thermal differential 10°C ±5°C.

Length of standard stem: 275 mm to 450 mm.

Approved as per European Rule EN 60730-1, EN 60730-2-9:2010 and to requirements of the directive L.V.D. 2006/95/CE.

TERMOSTATO UNIPOLARE SERIE "RTR" THERMOSTAT "RTR" TYPE

STANDARD CODE	ASTA-STEM Ø (mm) L	TARATURA FONDO SCALA FULL SCALE CALIBRATION	CORRENTE/TENSIONE CURRENT/VOLTAGE
1TERFA 7020 RTR	6 275	70°C ± 5	20 A/250 V
1TERFA 8020 RTR	6 275	80°C ± 5	20 A/250 V

Asta termosensibile ottone - Brass stem

TERMOSTATO UNIPOLARE SERIE "RTD" CON SICUREZZA BIPOLARE THERMOSTAT WITH BIPOLAR SECURITY "RTD" TYPE

STANDARD CODE	TARATURA FUNZIONALE FUNCTIONING TEMPERATURE	SICUREZZA SAFETY	CORRENTE/TENSIONE CURRENT/VOLTAGE	LEVA REGOLAZ. ESTERNA EXT. REGULATION LEVER
2TERFA 6575 RTD	65°C ± 5	75°C	20 A/250 V	/
2TERFA 6590 RTD	65°C ± 5	90°C	20 A/250 V	/
2TERFA 7083 RTD	70°C ± 5	83°C	20 A/250 V	/
2TERFA 8292 RTD	82°C ± 5	92°C	20 A/250 V	/
2TERFA 7083 RTDL	70°C ± 5	83°C	20 A/250 V	X
2TERFA 8292 RTDL	82°C ± 5	92°C	20 A/250 V	X



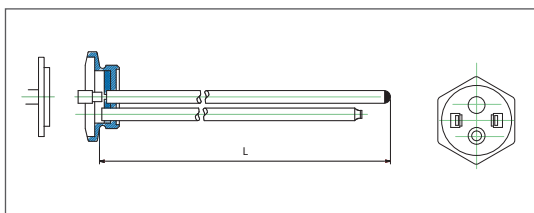


RESISTENZE ELETTRICHE CORAZZATE PER SCALDABAGNO SHEATHED HEATING ELEMENTS FOR WATER HEATERS

Condizioni di funzionamento: 6 bar /95°C max
Tappo filettato: 1" 1/4 GAS UNI338 - Ottone
Resistenza diametro: Rame - 8,5 mm
Porta sonda termostato: Lunghezza 275 mm - rame
Omologazione IMQ

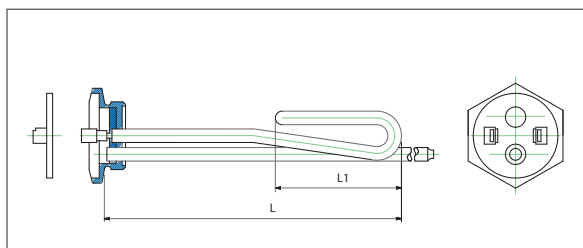
Working conditions: 6 bar /95°C max
Brass cap: 1 "1/4 GAS UNI338
Heating element diameter: copper - 8,5 mm
Probe holder thermostat: length 275 mm - copper
IMQ Certification.

RESISTENZE DIRITTE SU TAPPO STRAIGHT HEATING ELEMENTS WITH BRASS CAP



STANDARD CODE	WATT	VOLT	L=mm
3BO90900S	1000	220	280
3BO90901S	1200	220	280
3BO90902S	1500	220	280
3BO90903S	1200	220	750
3BO202230	2000	220	280
3BO202235	2000	220	350
3BO202240	2000	220	400
3BO202260	2000	220	600
3BO202290	2000	220	900
3BO252240	2500	220	400
3BO302230	3000	220	280

RESISTENZE RICURVE SU TAPPO BENT HEATING ELEMENTS WITH BRASS CAP



STANDARD CODE	WATT	VOLT	L=mm	L1=mm
3BO90910SL	1000	220	165	120
3BO90911SL	1200	220	165	120
3BO90912SL	1500	220	165	120
3BO202230R	2000	220	165	120
3BO90913SL	2000	220	300	100
3BO302230R	3000	220	300	145

Possibilità di fornitura con tensione 110V-127V-230V-240V
Opportunity to supply at 110V-127V-230V-240V

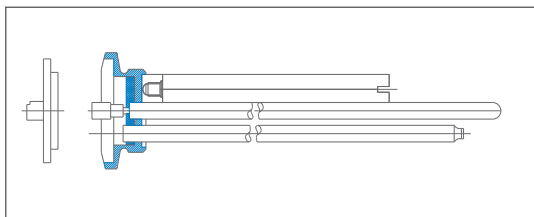


RECO

RECO

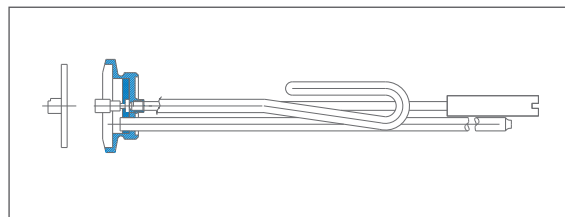


RESISTENZE DIRITTE SU TAPPO CON PORTA ANODO ED EVENTUALE ANODO MONTATO
STRAIGHT HEATING ELEMENTS WITH BRASS CAP WITH INSERT FOR ANODE AND EVENTUALLY EQUIPPED WITH MAGNESIUM ANODE

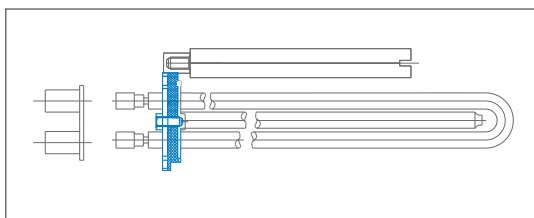


POTENZE E VOLTAGGIO A RICHIESTA
POWER AND VOLTAGE ON REQUEST

RESISTENZE RICURVE SU TAPPO CON PORTA ANODO ED EVENTUALE ANODO MONTATO
BENT HEATING ELEMENTS WITH BRASS CAP WITH INSERT FOR ANODE AND EVENTUALLY EQUIPPED WITH MAGNESIUM ANODE

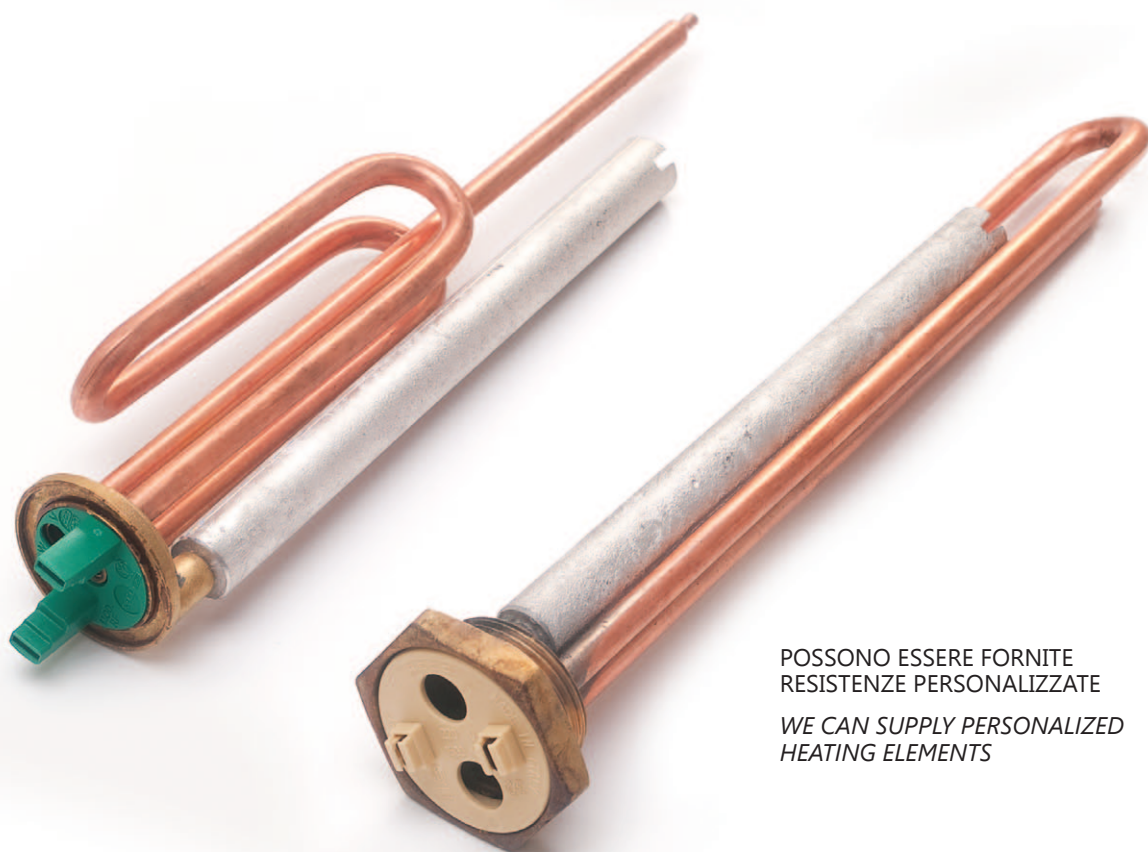
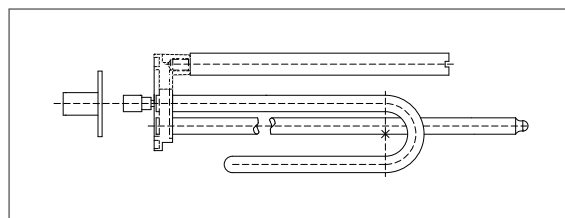


RESISTENZE DIRITTE SU FLANGIA CON PORTA ANODO ED EVENTUALE ANODO MONTATO
STRAIGHT HEATING ELEMENTS ON FLANGED PLUG CAP WITH INSERT FOR ANODE AND EVENTUALLY EQUIPPED WITH MAGNESIUM ANODE



POTENZE E VOLTAGGIO A RICHIESTA
POWER AND VOLTAGE ON REQUEST

RESISTENZE RICURVE SU FLANGIA CON PORTA ANODO ED EVENTUALE ANODO MONTATO
BENT HEATING ELEMENTS ON FLANGED PLUG CAP WITH INSERT FOR ANODE AND EVENTUALLY EQUIPPED WITH MAGNESIUM ANODE



POSSONO ESSERE FORNITE
RESISTENZE PERSONALIZZATE

WE CAN SUPPLY PERSONALIZED
HEATING ELEMENTS

RECO

RECO